



# 2017 USF-Nielsen Sunshine State Survey Data Release 6

## Detailed Analysis and Crosstabs: Race Relations, Hate Groups, and Immigrants


### Contents

#### Detailed Analysis

-  State Government Performance Ratings – Improving Race Relations
-  Right Direction/Wrong Direction: More Rights and Assistance to Undocumented Immigrants
- NEW** Right Direction/Wrong Direction: Provide Funding to Protect Religious Facilities and Schools from Attacks by Hate Groups
- NEW** Right Direction/Wrong Direction: Require Employers to Check Immigration Status of New Hires
- NEW** Right Direction/Wrong Direction: Provide Safe Spaces on College Campuses for Undocumented Alien Students

#### Crosstabulation Analysis

- State Government Performance Ratings – Improving Race Relations
- Right Direction/Wrong Direction: More Rights and Assistance to Undocumented Immigrants
- Right Direction/Wrong Direction: Provide Funding to Protect Religious Facilities and Schools from Attacks by Hate Groups
- Right Direction/Wrong Direction: Require Employers to Check Immigration Status of New Hires
- Right Direction/Wrong Direction: Provide Safe Spaces on College Campuses for Undocumented Alien Students

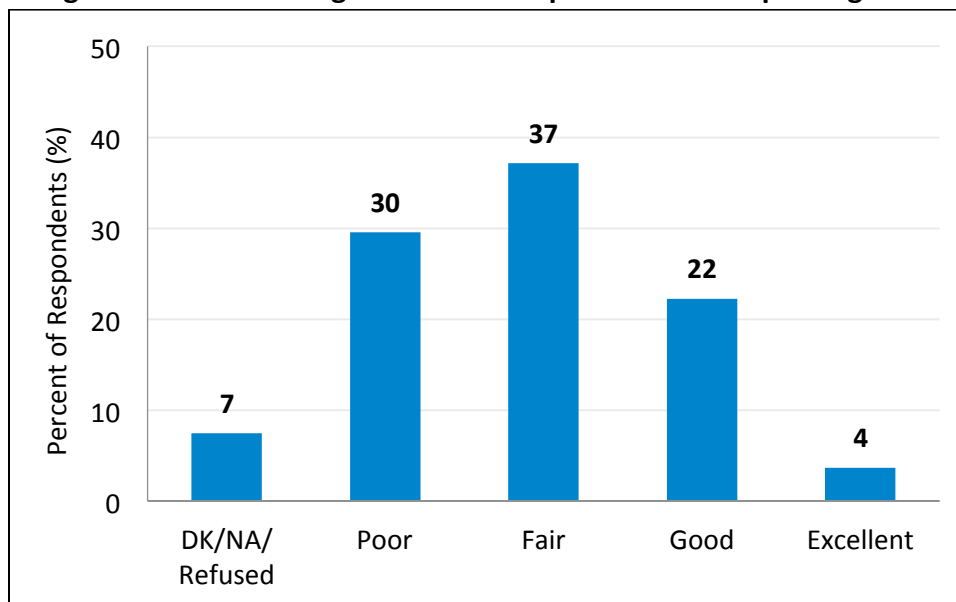
NOTE: **NEW** indicates question first asked on this year’s survey  
 indicates question has historical trend data

## Detailed Analysis

### State Government Performance Ratings – Improving Race Relations

- Overall, Floridians give downbeat ratings of the state’s performance improving race relations, with only 26% saying that the state does a good or excellent job in this area. About two-thirds (67%) say that the state does either a poor or fair job.
- Poor ratings of the state’s performance improving race relations have nearly doubled since 2008, from 17% to 30%. Positive ratings fell from 42% to 26% over the same period.
- A third of Florida Hispanics (33%) rate the state’s performance improving race relations positively, as do 26% of whites. African Americans are highly critical, with nearly half (46%) saying the state does a poor job—about twice as likely as whites or Hispanics—and another 36% say the state does only a fair job.
- Most likely to say that the state government is doing a good or excellent job of improving race relations are younger (ages 18-34) and older (80 and older) Floridians, and those with only a high school diploma or less.
- Regionally, residents of the North Florida (34%), Orlando (28%), and Tampa Bay (28%) areas are most likely to rate the state’s performance improving race relations positively, while residents of Palm Beach (83%), Naples (72%), and Miami/Ft. Lauderdale (71%) are most likely to say the state is doing a poor or fair job.
- See Significant Factors tables, below, for more information on demographic differences.

**Floridians give downbeat ratings to the state’s performance improving race relations**

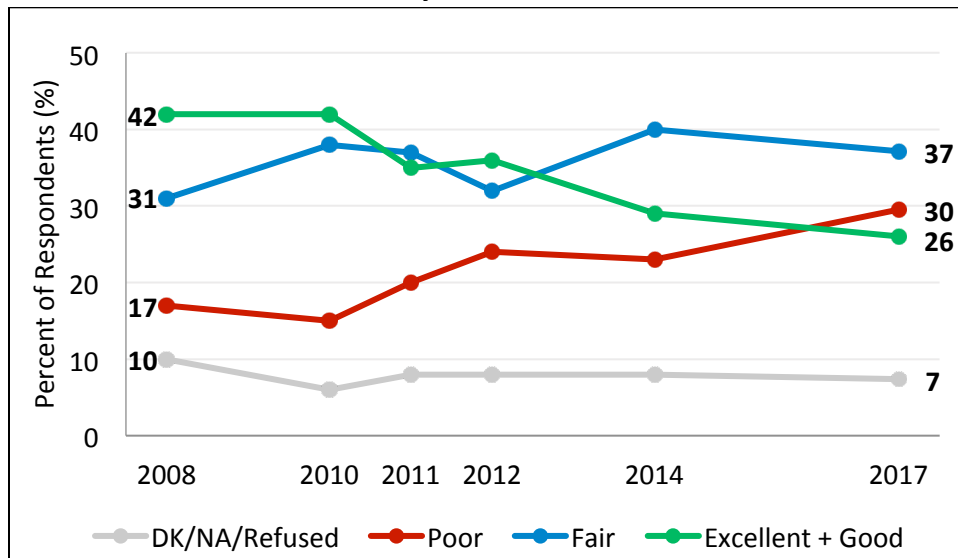


Question wording: “How good a job does the state do improving race relations? Would you say excellent, good, fair or poor?”

Source: Telephone survey of a random sample of 1,215 Floridians ages 18 and older conducted July 24-August 14, 2017. Margin of error ± 2.8%.

**2017 USF-Nielsen Sunshine State Survey**

**“Poor” ratings of the State’s efforts to improve race relations have nearly doubled since 2008**



Question wording: “How good a job does the state do improving race relations? Would you say excellent, good, fair or poor?”

Source: Annual USF-Nielsen Sunshine State Surveys.

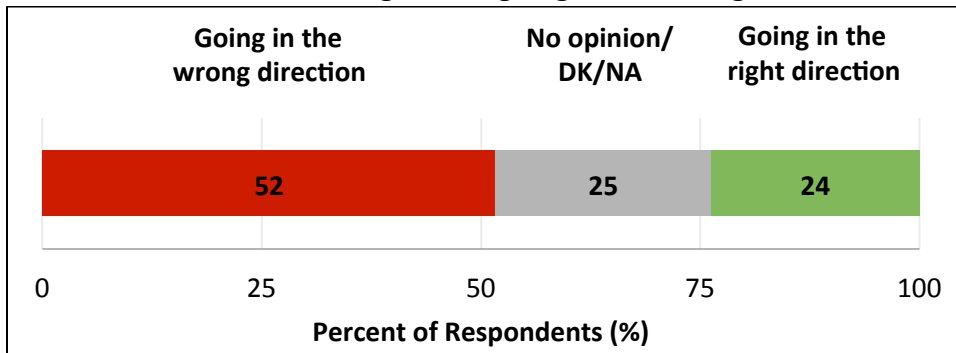
**2017 USF-Nielsen Sunshine State Survey**

**Right Direction/Wrong Direction: More Rights and Assistance to Undocumented Immigrants**

- About half of Floridians (52%) say that the State of Florida giving more rights and assistance to undocumented immigrants would be going in the wrong direction. Only 24% say that this is going in the right direction, while 25% did not express an opinion.
- There has been little change in opinions on this issue since the question was asked on the 2016 USF-Nielsen Sunshine State Survey.
- Younger Floridians (ages 18 to 34) are the only age group analyzed that is evenly split between saying that giving more rights and assistance to undocumented immigrants is going in the right direction (35%) or the wrong direction (36%). Half or more say that providing more rights and assistance to undocumented immigrants would be going in the wrong direction for all age groups between age 35 and 79. Floridians ages 80 and older are relatively more likely to have not expressed an opinion.
- Florida Hispanics are also about evenly split on the issue of the state giving more rights to undocumented immigrants, with 35% saying it is going in the right direction and 38% saying it is going in the wrong direction. Fully 28% percent of African Americans say that the change would be going in the right direction (wrong direction: 37%), while a majority of whites (61%) see the change as going in the wrong direction.
- Also more likely to say the state granting more rights and assistance to undocumented immigrants is going in the right direction are women, those with a child under age 18 living in their home, those not in the workforce, residents living in a household earning \$35,000 or more, and those with only a high school diploma or less.

- Regionally, residents of the Miami/Ft. Lauderdale (34%), and Palm Beach (28%) areas have higher proportions supporting the proposal, while the larger share of residents of North Florida (61%), Orlando (57%), and Tampa Bay (56%) say the change is moving in the wrong direction.
- See Significant Factors tables, below, for more information on demographic differences.

**About half of Floridians say giving more rights and assistance to undocumented immigrants is going in the wrong direction**

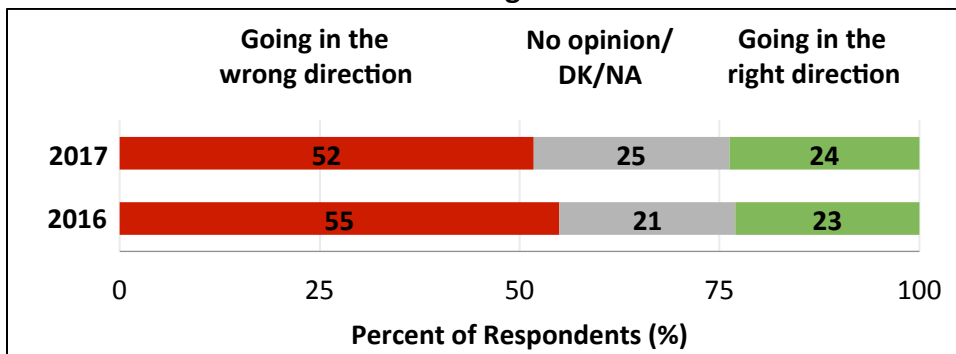


Question wording: “There are lots of issues facing Florida today. If the State of Florida were to give more rights and assistance to undocumented (illegal) immigrants, would you say that was going in the right direction or the wrong direction, or do you have no opinion about it?”

Source: Telephone survey of a random sample of 1,215 Floridians ages 18 and older conducted July 24-August 14, 2017. Margin of error ± 2.8%.

**2017 USF-Nielsen Sunshine State Survey**

**Little change in opinions of giving more rights and assistance to undocumented immigrants in the state**



Question wording: “There are lots of issues facing Florida today. If the State of Florida were to give more rights and assistance to undocumented (illegal) immigrants, would you say that was going in the right direction or the wrong direction, or do you have no opinion about it?”

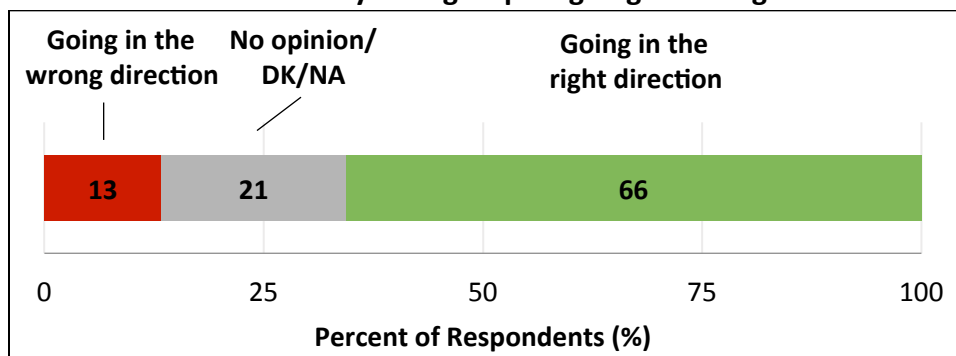
Source: Annual USF-Nielsen Sunshine State Surveys.

**2017 USF-Nielsen Sunshine State Survey**

### Right Direction/Wrong Direction: Provide Funding to Protect Religious Facilities and Schools from Attacks by Hate Groups

- Two-thirds of Floridians (66%) say that it would be going in the right direction for the State of Florida to provide funding to protect religious facilities and schools from attacks by hate groups. Relatively few say that this would be going in the wrong direction (13%). Twenty-one percent did not express an opinion on the issue.
- Women are significantly more likely than men to say that the state providing funding to protect religious facilities and schools from attacks by hate groups would be going in the right direction (71% vs. 60%).
- African Americans are more likely than whites or Hispanics to say that the state providing funding to protect religious facilities and schools from attacks by hate groups would be going in the right direction (71% vs. 66% of whites and 64% of Hispanics).
- See Significant Factors tables, below, for more information on demographic differences.

**Two-thirds of Floridians say providing funding to protect religious facilities and schools from attacks by hate groups is going in the right direction**



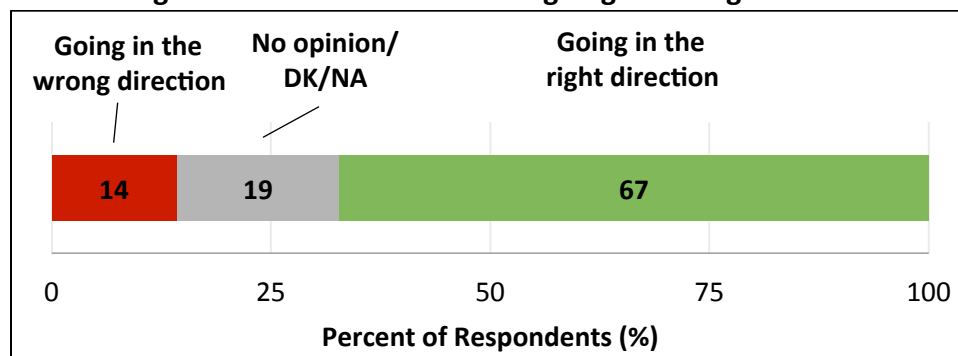
Question wording: “There are lots of issues facing Florida today. If the State of Florida were to provide funding to protect religious facilities and schools from attacks by hate groups, would you say that was going in the right direction or the wrong direction, or do you have no opinion about it?”  
Source: Telephone survey of a random sample of 1,215 Floridians ages 18 and older conducted July 24-August 14, 2017. Margin of error ± 2.8%.

**2017 USF-Nielsen Sunshine State Survey**

## Right Direction/Wrong Direction: Require Employers to Check Immigration Status of New Hires

- Two-thirds of Floridians (67%) say that requiring employers to check the immigration status of new hires would be going in the right direction. Fewer say that this is going in the wrong direction (14%) or did not express an opinion (19%).
- Floridians ages 55 to 64 are most likely to say that requiring employers to check the immigration status of new hires is going in the right direction (80%). More than 60% of Floridians of other age groups favor this as well, with the exception of those ages 18 to 34 (only 54% say this is going in the right direction).
- About three-in-four whites (73%) say that requiring employers to check the immigration status of new hires is going in the right direction, compared with 59% of Hispanics and 56% of African Americans.
- College graduates are twice as likely as those with only a high school diploma or less to say that requiring employers to check the immigration status of new hires is going in the wrong direction (18% vs. 9%).
- Substantial majorities of the residents of Naples (80%), North Florida (75%), and Orlando (74%) say that the state requiring employers to check the immigration status of new hires is going in the right direction, while support is much lower in Miami/Ft. Lauderdale (57%), and Palm Beach (58%).
- See Significant Factors tables, below, for more information on demographic differences.

**Two-thirds of Floridians say requiring employers to check the immigration status of new hires is going in the right direction**



Question wording: “There are lots of issues facing Florida today. If the State of Florida were to require employers to check the immigration status of new hires, would you say that was going in the right direction or the wrong direction, or do you have no opinion about it?”

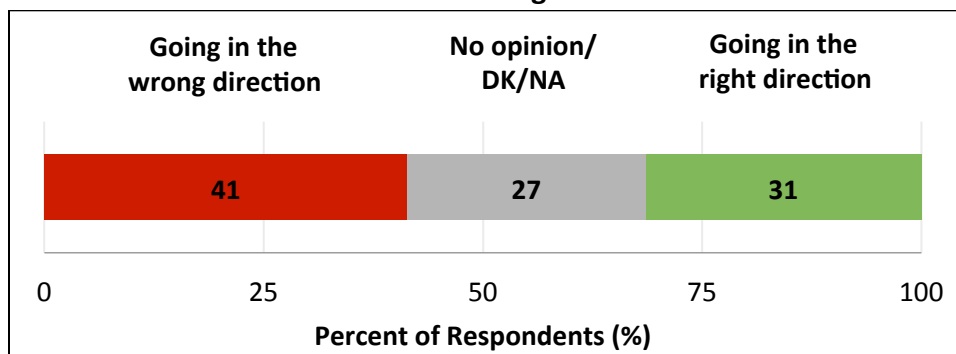
Source: Telephone survey of a random sample of 1,215 Floridians ages 18 and older conducted July 24-August 14, 2017. Margin of error ± 2.8%.

**2017 USF-Nielsen Sunshine State Survey**

## Right Direction/Wrong Direction: Provide Safe Spaces on College Campuses for Undocumented Alien Students

- Floridians are divided over whether the State of Florida should provide safe spaces on college campuses for undocumented immigrant students. More say that this would be going in the wrong direction than the right direction (41% vs. 31%), although a substantial minority did not express an opinion on the issue (27%).
- About half of men (49%) say that it would be moving in the wrong direction for the state to provide safe spaces on college campuses for unauthorized immigrant students, compared with only 35% of women.
- Nearly half of Floridians ages 18 to 34 (47%) say that it is going in the right direction for the state to provide safe spaces on college campuses for unauthorized immigrant students, far higher than among other age groups (all less than 30%).
- Nearly half of African Americans (47%) say that it is going in the right direction for the state to provide safe spaces on college campuses for undocumented immigrant students, compared with 39% of Hispanics and only 26% of whites.
- Higher shares of those who are unemployed, not in the workforce, living in a household with an income of \$75,000 or more, and those with only a high school diploma or more say that the state providing safe spaces on college campuses for undocumented immigrant students is going in the right direction.
- Residents of Miami/Ft. Lauderdale (48%), and Palm Beach (34%) express the strongest support for the state providing safe spaces on college campuses for undocumented immigrant students, while higher shares of residents of North Florida (49%), Tampa Bay (48%), and Orlando (43%) say that the change would be going in the wrong direction.
- See Significant Factors tables, below, for more information on demographic differences.

**Floridians divided over providing safe spaces on college campuses for undocumented immigrant students**



Question wording: “There are lots of issues facing Florida today. If the State of Florida were to provide safe spaces on college campuses for undocumented alien students, would you say that was going in the right direction or the wrong direction, or do you have no opinion about it?”

Source: Telephone survey of a random sample of 1,215 Floridians ages 18 and older conducted July 24-August 14, 2017. Margin of error ± 2.8%.

## Crosstabulation Analysis

This section provides analysis of all statistically significant differences among several demographic, socioeconomic, and geographic groups. *If results by a certain group are not shown, then any differences cannot be reliably attributed to actual differences between the groups.*

### State Government Performance Ratings – Improving Race Relations

**Significant Factors: State Government Performance Ratings – Improving Race Relations**

Respondent Characteristics		State government performance ratings – Improving race relations				
		DK/NA/Refused	Poor	Fair	Good	Excellent
		%	%	%	%	%
<b>All Floridians</b>		<b>7</b>	<b>30</b>	<b>37</b>	<b>22</b>	<b>4</b>
<b>Gender *</b>	Male	6	32	35	22	5
	Female	7	28	40	22	2
<b>Age Group ***</b>	18-34	4	29	36	26	6
	35-54	11	30	37	20	1
	55-64	4	34	38	18	6
	65-79	8	29	40	21	2
	80 and older	12	17	35	31	5
<b>Child at Home *</b>	Yes	9	25	41	23	2
	No	7	31	36	22	4
<b>Race/Ethnicity ***</b>	White	8	26	40	22	4
	African-American	5	46	36	13	1
	Hispanic	9	25	33	30	3
	Other	6	36	31	22	4
<b>Household Income ***</b>	<\$35,000	7	30	35	25	2
	\$35,000-\$74,999	6	26	42	23	4
	\$75,000+	5	31	38	23	4
	DK/NA/Refused	17	32	30	14	7
<b>Education *</b>	High School or less	11	22	37	26	4
	Some College	7	28	41	20	4
	College Grad	7	33	35	23	3
<b>Child Enrolled in School **</b>	Child in School	9	26	41	22	2
	No Child in School	7	31	35	22	4

Note: See full notes at end of table.



**Significant Factors: State Government Performance Ratings –  
Improving Race Relations, cont.**

Respondent Characteristics		State government performance ratings – Improving race relations				
		DK/NA/ Refused	Poor	Fair	Good	Excellent
		%	%	%	%	%
<b>All Floridians</b>		<b>7</b>	<b>30</b>	<b>37</b>	<b>22</b>	<b>4</b>
<b>Region ***</b>	<b>Tampa Bay</b>	10	25	38	25	3
	<b>Miami/Ft. Lauderdale</b>	6	39	32	20	4
	<b>Orlando</b>	11	21	40	24	4
	<b>Palm Beach</b>	2	34	49	14	1
	<b>North Florida</b>	6	27	34	26	8
	<b>Naples</b>	8	38	34	20	<1

Significance levels: \* 0.05; \*\* 0.01; \*\*\* 0.001

Question wording: “How good a job does the state do improving race relations? Would you say excellent, good, fair or poor?”

Note: Rows sum to total. Figures may not add to 100% due to rounding. Results for Naples based on a small number of responses and should be interpreted with caution.

Source: Telephone survey of a random sample of 1,215 Floridians ages 18 and older conducted July 24-August 14, 2017.

Margin of error differs between various groups depending on sample size.

2017 USF-Nielsen Sunshine State Survey

**Right Direction/Wrong Direction: More Rights and Assistance to Undocumented Immigrants**

**Significant Factors: Right Direction/Wrong Direction:  
More Rights and Assistance to Undocumented Immigrants**

Respondent Characteristics		Right direction/wrong direction: More rights and assistance to undocumented immigrants		
		Going in the Wrong Direction	No Opinion/ DK/NA	Going in the Right Direction
		%	%	%
<b>All Floridians</b>		<b>52</b>	<b>25</b>	<b>24</b>
<b>Gender *</b>	<b>Male</b>	56	23	21
	<b>Female</b>	49	25	26
<b>Age Group ***</b>	<b>18-34</b>	36	29	35
	<b>35-54</b>	60	23	17
	<b>55-64</b>	62	17	22
	<b>65-79</b>	53	27	20
	<b>80 and older</b>	44	30	26

Note: See full notes at end of table.

**Significant Factors: Right Direction/Wrong Direction:  
More Rights and Assistance to Undocumented Immigrants**

Respondent Characteristics		Right direction/wrong direction: More rights and assistance to undocumented immigrants		
		Going in the Wrong Direction	No Opinion/DK/NA	Going in the Right Direction
		%	%	%
<b>All Floridians</b>		<b>52</b>	<b>25</b>	<b>24</b>
<b>Child at Home ***</b>	<b>Yes</b>	54	21	26
	<b>No</b>	51	26	23
<b>Race/Ethnicity ***</b>	<b>White</b>	61	21	19
	<b>African-American</b>	37	35	28
	<b>Hispanic</b>	38	27	35
	<b>Other</b>	51	26	23
<b>Employment Status ***</b>	<b>Full Time</b>	58	22	20
	<b>Part Time</b>	44	28	28
	<b>Not in Work Force</b>	40	23	37
	<b>Unemployed</b>	45	31	24
	<b>Retired</b>	53	25	22
<b>Household Income ***</b>	<b>&lt;\$35,000</b>	48	30	22
	<b>\$35,000-\$74,999</b>	53	20	27
	<b>\$75,000+</b>	54	20	27
	<b>DK/NA/Refused</b>	52	34	14
<b>Education **</b>	<b>High School or less</b>	41	34	25
	<b>Some College</b>	57	20	23
	<b>College Grad</b>	52	24	24
<b>Child Enrolled in School ***</b>	<b>Child in School</b>	55	20	25
	<b>No Child in School</b>	51	26	23
<b>Region ***</b>	<b>Tampa Bay</b>	56	23	21
	<b>Miami/Ft. Lauderdale</b>	38	28	34
	<b>Orlando</b>	57	24	20
	<b>Palm Beach</b>	48	24	28
	<b>North Florida</b>	61	22	17
	<b>Naples</b>	52	27	21

Significance levels: \* 0.05; \*\* 0.01; \*\*\* 0.001

Question wording: "There are lots of issues facing Florida today. If the State of Florida were to give more rights and assistance to undocumented (illegal) immigrants, would you say that was going in the right direction or the wrong direction, or do you have no opinion about it?"

Note: Rows sum to total. Figures may not add to 100% due to rounding. Results for Naples based on a small number of responses and should be interpreted with caution.

Source: Telephone survey of a random sample of 1,215 Floridians ages 18 and older conducted July 24-August 14, 2017.

Margin of error differs between various groups depending on sample size.

**2017 USF-Nielsen Sunshine State Survey**

**Right Direction/Wrong Direction: Provide Funding to Protect Religious Facilities and Schools from Attacks by Hate Groups**

**Significant Factors: Right Direction/Wrong Direction:  
Provide Funding to Protect Religious Facilities and Schools from Attacks by Hate Groups**

Respondent Characteristics		Right direction/wrong direction: Provide funding to protect religious facilities and schools from attacks by hate groups		
		Going in the Wrong Direction	No Opinion/DK/NA	Going in the Right Direction
		%	%	%
<b>All Floridians</b>		<b>13</b>	<b>21</b>	<b>66</b>
<b>Gender ***</b>	<b>Male</b>	16	24	60
	<b>Female</b>	11	18	71
<b>Race/Ethnicity ***</b>	<b>White</b>	15	20	66
	<b>African-American</b>	4	26	71
	<b>Hispanic</b>	16	20	64
	<b>Other</b>	13	26	62
<b>Education *</b>	<b>High School or less</b>	11	27	62
	<b>Some College</b>	11	23	66
	<b>College Grad</b>	16	18	66

Significance levels: \* 0.05; \*\* 0.01; \*\*\* 0.001

Question wording: "There are lots of issues facing Florida today. If the State of Florida were to provide funding to protect religious facilities and schools from attacks by hate groups, would you say that was going in the right direction or the wrong direction, or do you have no opinion about it?"

Note: Rows sum to total. Figures may not add to 100% due to rounding.

Source: Telephone survey of a random sample of 1,215 Floridians ages 18 and older conducted July 24-August 14, 2017.

Margin of error differs between various groups depending on sample size.

**2017 USF-Nielsen Sunshine State Survey**

**Right Direction/Wrong Direction: Require Employers to Check Immigration Status of New Hires**

**Significant Factors: Right Direction/Wrong Direction:  
Require Employers to Check Immigration Status of New Hires**

Respondent Characteristics		Right direction/wrong direction: Require employers to check the immigration status of new hires		
		Going in the Wrong Direction	No Opinion/DK/NA	Going in the Right Direction
		%	%	%
<b>All Floridians</b>		<b>14</b>	<b>19</b>	<b>67</b>
<b>Age Group ***</b>	<b>18-34</b>	18	28	54
	<b>35-54</b>	12	17	71
	<b>55-64</b>	11	10	80
	<b>65-79</b>	17	15	69
	<b>80 and older</b>	12	20	68
<b>Race/Ethnicity ***</b>	<b>White</b>	13	14	73
	<b>African-American</b>	18	26	56
	<b>Hispanic</b>	15	25	59
	<b>Other</b>	13	22	65
<b>Employment Status *</b>	<b>Full Time</b>	11	19	70
	<b>Part Time</b>	18	20	62
	<b>Not in Work Force</b>	16	25	59
	<b>Unemployed</b>	16	20	65
	<b>Retired</b>	15	15	71
<b>Household Income **</b>	<b>&lt;\$35,000</b>	13	20	67
	<b>\$35,000-\$74,999</b>	15	20	65
	<b>\$75,000+</b>	17	12	71
	<b>DK/NA/Refused</b>	10	27	63
<b>Education ***</b>	<b>High School or less</b>	9	27	64
	<b>Some College</b>	12	18	71
	<b>College Grad</b>	18	16	66

Note: See full notes at end of table.

**Significant Factors: Right Direction/Wrong Direction:  
Require Employers to Check Immigration Status of New Hires, cont.**

Respondent Characteristics		Right direction/wrong direction: Require employers to check the immigration status of new hires		
		Going in the Wrong Direction	No Opinion/DK/NA	Going in the Right Direction
		%	%	%
<b>All Floridians</b>		<b>14</b>	<b>19</b>	<b>67</b>
<b>Region ***</b>	<b>Tampa Bay</b>	17	16	67
	<b>Miami/Ft. Lauderdale</b>	17	26	57
	<b>Orlando</b>	11	15	74
	<b>Palm Beach</b>	21	21	58
	<b>North Florida</b>	8	17	75
	<b>Naples</b>	10	10	80

Significance levels: \* 0.05; \*\* 0.01; \*\*\* 0.001

Question wording: “There are lots of issues facing Florida today. If the State of Florida were to require employers to check the immigration status of new hires, would you say that was going in the right direction or the wrong direction, or do you have no opinion about it?”

Note: Rows sum to total. Figures may not add to 100% due to rounding. Results for Naples based on a small number of responses and should be interpreted with caution.

Source: Telephone survey of a random sample of 1,215 Floridians ages 18 and older conducted July 24-August 14, 2017.

Margin of error differs between various groups depending on sample size.

2017 USF-Nielsen Sunshine State Survey

**Right Direction/Wrong Direction: Provide Safe Spaces on College Campuses for Undocumented Alien Students**

**Significant Factors: Right Direction/Wrong Direction:  
Provide Safe Spaces on College Campuses for Undocumented Alien Students**

Respondent Characteristics		Provide safe spaces on college campuses for unauthorized immigrant students		
		Going in the Wrong Direction	No Opinion/DK/NA	Going in the Right Direction
		%	%	%
<b>All Floridians</b>		<b>41</b>	<b>27</b>	<b>31</b>
<b>Gender ***</b>	<b>Male</b>	49	26	26
	<b>Female</b>	35	28	37
<b>Age Group ***</b>	<b>18-34</b>	26	28	47
	<b>35-54</b>	47	27	27
	<b>55-64</b>	56	20	25
	<b>65-79</b>	47	26	27
	<b>80 and older</b>	33	45	22

Note: See full notes at end of table.

**Significant Factors: Right Direction/Wrong Direction:  
Provide Safe Spaces on College Campuses for Undocumented Alien Students, cont.**

Respondent Characteristics		Provide safe spaces on college campuses for unauthorized immigrant students		
		Going in the Wrong Direction	No Opinion/DK/NA	Going in the Right Direction
		%	%	%
<b>All Floridians</b>		<b>41</b>	<b>27</b>	<b>31</b>
<b>Race/Ethnicity ***</b>	<b>White</b>	48	26	26
	<b>African-American</b>	24	29	47
	<b>Hispanic</b>	35	25	39
	<b>Other</b>	43	34	23
<b>Employment Status ***</b>	<b>Full Time</b>	45	26	29
	<b>Part Time</b>	34	31	35
	<b>Not in Work Force</b>	36	22	42
	<b>Unemployed</b>	35	20	45
	<b>Retired</b>	44	31	25
<b>Household Income ***</b>	<b>&lt;\$35,000</b>	33	37	30
	<b>\$35,000-\$74,999</b>	41	28	32
	<b>\$75,000+</b>	48	18	34
	<b>DK/NA/Refused</b>	46	27	27
<b>Education ***</b>	<b>High School or less</b>	28	37	34
	<b>Some College</b>	43	27	29
	<b>College Grad</b>	45	23	32
<b>Region ***</b>	<b>Tampa Bay</b>	48	24	28
	<b>Miami/Ft. Lauderdale</b>	32	20	48
	<b>Orlando</b>	43	36	20
	<b>Palm Beach</b>	32	34	34
	<b>North Florida</b>	49	24	27
	<b>Naples</b>	39	34	27

Significance levels: \* 0.05; \*\* 0.01; \*\*\* 0.001

Question wording: “There are lots of issues facing Florida today. If the State of Florida were to provide safe spaces on college campuses for undocumented alien students, would you say that was going in the right direction or the wrong direction, or do you have no opinion about it?”

Note: Rows sum to total. Figures may not add to 100% due to rounding. Results for Naples based on a small number of responses and should be interpreted with caution.

Source: Telephone survey of a random sample of 1,215 Floridians ages 18 and older conducted July 24-August 14, 2017.

Margin of error differs between various groups depending on sample size.

**2017 USF-Nielsen Sunshine State Survey**

– END –